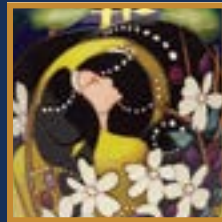


# MOORCROFT



— 2019 —

# ANNA LILY

Designer: Nicola Slaney



# THE GOLDEN AGE OF STEAM

Designer: Paul Hilditch



PLQ 23 | Limited Edition: 150

A wonder of Victorian gothic architecture and one of the most elegant stations in the world, St. Pancras Railway Station opened 150 years ago in 1868 to connect London with England's major cities. The station design featured a platform deck which was raised up on a grid of cast-iron columns in order to allow steam engines to pass over the Regent's canal. The space underneath, now called the Arcade, was designed and used to store beer. The roof was made up of a series of wrought iron ribs holding up the largest single spanned roof in the world when first built. Its design was copied across the world, including at Grand Central Station in New York.



# BRAMBLE REVISITED

Designer: Alicia Amison



# CALIFORNIA DREAMING

Designer: Nicola Slaney

After a recent vacation tour of California, Nicola fell in love with this rich state and its culture, architecture and above all, its biodiversity. On her return home, Nicola put pencil to paper and began a series of California-inspired designs, taking her back to hazy, sun-filled days, fresh ocean breezes and that electric atmosphere of San Francisco.





# CONFETTI

Designer: Emma Bossons FRSA

75/10  
Numbered Edition



102/7  
Numbered Edition

65/6  
Numbered Edition

72/6  
Numbered Edition

200/8  
Numbered Edition

# STARGAZER LILY

Designer: Vicky Lovatt

With phenomenal accuracy, Vicky captures every curve and twist of fully-blossoming Stargazer lilies upon a contemporary backdrop of geometric forms. With blooms faced towards the sky, it is no wonder they are known as Stargazers. To push this enchanting bouquet further into celestial realms, the pieces have been gently blushed with silver lustre gilding, giving them that eye-catching shine that invites us all in.



PLQ 10 | Open Edition

117/9 | Numbered Edition

# FLAMINGOS

Designer: Nicola Slaney

A modern shape created by Nicola herself, with parallel straight sides, hosts an elegant parade of greater flamingos. Slender legs pierce the blank space to hold up the plump, pink water birds, with gentle bowing necks. *Flamingos* captures the zesty interior movement for all things tropical.



161/11 | Open Edition

198/3

# TENGU

Designer: Vicky Lovatt



42/12

101/7

769/4

JU1

198/3

# FOREVER ENGLAND

Designer: Vicky Lovatt



# TREE SPARROWS

Designer: Kerry Goodwin

Every now and again, a great design will emerge from Moorcroft – one which, by its very nature, will cause heads to turn and collectors to open their doors and bring it into their homes. These designs do not have to cost a fortune to be wrapped in that prized cloak of greatness. Indeed, their simplicity can bring them from nowhere to play with our emotions and remain with us for ever thereafter. There can hardly be a less likely subject for greatness than a group of seven tree sparrows. They are seen posturing happily on the simplest of Moorcroft plaques.



PLQ 3 | Numbered Edition

# THE GATHERING

Designer: Helen Dale

Disappear into the world of the Canada goose, their elongated bodies rise up in graceful formation with vast wings outstretched over a wetland home. Complete with newly hatched goslings, nestled closely together against their mother's goose-down warmth, this wetland scene requires close examination. In a matter of months these hatchlings will be indistinguishable from their parents and they will join their peers, delightfully depicted by Helen, diving, waddling, and nesting among reeds.



PLQ13 | Numbered Edition



# MACKINTOSH 150<sup>TH</sup> ANNIVERSARY COLLECTION

**Designer:** Rachel Bishop BA (Hons), Emma Bossons FRSA, Kerry Goodwin and Nicola Slaney

Charles Rennie Mackintosh, born in 1868, was a Scottish architect, designer, watercolourist and artist. His work was influential on European design movements such as Art Nouveau. While working in architecture Mackintosh developed his own style: a contrast between strong right angles and floral-inspired decorative motifs with subtle curves, such as the Mackintosh Rose motif. His prolific career has inspired Moorcroft's designers to create a collection to celebrate this great man's life and work, including designs inspired by 78 Derngate in Northampton, the only English home he designed.



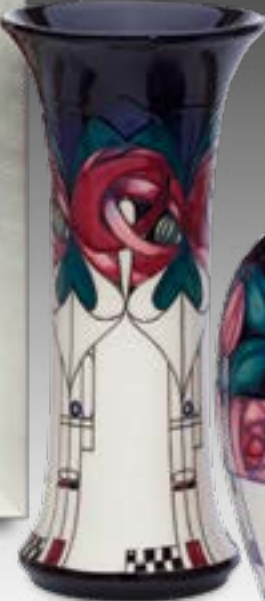
**Modernity**  
CL4 | Open Edition



**Swansong**  
JU7 | Numbered Edition



**Millside**  
PLQ 3  
Numbered Edition



**Buchanan**  
159/10 | Numbered Edition



**Kingsborough Gardens**  
102/7 | Numbered Edition



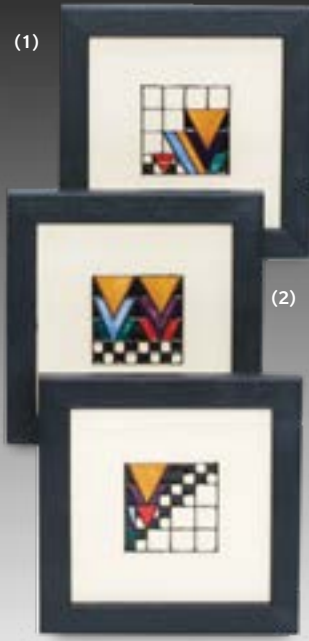
**Millside**  
121/10 | Numbered Edition



**Derngate**  
Mirror | Open Edition



**Derngate**  
161/11 | Numbered Edition



**Derngate**  
PLQ 6 | Open Editions



520/8 | Numbered Edition

# WINDY HILL

**Designer:** Kerry Goodwin

*Windy Hill*, a picture-perfect home in Kilmacolm, Scotland, is one of only two private homes built by Charles Rennie Mackintosh. Mackintosh was commissioned to build *Windy Hill* in 1900, when he was just 32 and embarking on what promised to be a brilliant career as an architect. Furnished by him and his wife, Margaret Macdonald, the home features incredible fireplaces, panelling, stained glass, light fixtures and decorative schemes. Kerry's design honours this intrinsic part of Scottish heritage as she places *Windy Hill* amongst Art Nouveau swirls in surrounding meadows, footpaths and skies.

# BELLAHOUSTON

**Designer:** Emma Bossons FRSA



# GLASGOW SCHOOL OF ART

**Designer:** Emma Bossons FRSA

In June 2018, sadly for the second time in only four years, the *Glasgow School of Art* library caught fire in a heart-wrenching accident. Charles Rennie Mackintosh's building designs have been a bedrock of inspiration for modern architects and Emma's evocative design is a touching vision of this historic 1909 building. Emotive shades of blues and lilac are the only colours to grace the vase, in which delicately etched window panes meet iconic iron railings. With heads bowing in respect, Mackintosh's willowy female forms wisp their way to the heavens, with heads crowned in dotted halos.



64/20 | Numbered Edition

# SLEEPING BEAUTY

**Designer:** Nicola Slaney

High above the River Clyde in Helensburgh, Scotland, Hill House is said to be the finest of Charles Rennie Mackintosh's domestic designs and the iconic Arts and Crafts house and gardens date back to 1902. Publisher Walter Blackie commissioned Mackintosh to design not only the house and grounds, but also the furniture, fittings and decorative schemes. The architect's wife, Margaret, designed and produced many of the textiles, as well as a "sleeping princess" gesso fireplace panel. Adapted into ceramic form, the viewer is drawn to a reclining beauty, who floats like a Rossetti muse among Burne-Jones style Briar roses.



PLQ 2 | Numbered Edition

# RENNIE ROSE

**Senior Designer:** Rachel Bishop BA (Hons)





# MONTHS OF THE YEAR

**Designers:** Emma Bossons FRSA, Vicky Lovatt & Nicola Slaney



(1) January (EB), (2) February (EB), (3) March (NS), (4) April (NS), (5) May (EB), (6) June (NS), (7) July (NS), (8) August (VL), (9) September (VL), (10) October (VL), (11) November (EB), (12) December (VL).

# THE FROG AND THE DRAGONFLY

**Designer:** Kerry Goodwin

That famous Florian style is brought back to life in colours of golden honey and tanzanite. Kerry embellishes flourishes of foliage with dragonflies at the top of the vase and frogs at the base. Crafty linework stylizes both the creatures in what is a most unusual Florianesque creation. On close inspection, scales and veins can be seen on the surface of both the frog and the dragonfly, expertly shaded with total precision.



92/9 | Limited Edition 40

# GRASMERE BLUEBELLS

**Designer:** Nicola Slaney

It is thought that around half of the world's population of bluebells are to be found in the UK. Captured in this design is one of the two small lakes of Grasmere and Rydal Water, separated by a woodland through which the River Rothay babbles merrily. These woods are carpeted with bluebells in spring, and in *Grasmere Bluebells* they bow their heads gracefully under a canopy of clouded, greenish-blue trees.



3/5 | Numbered Edition

# 1901

**Designer:** Nicola Slaney

Blackwell, the Arts and Crafts House, overlooking Lake Windermere designed by architect, Mackay Hugh Baillie-Scott in 1901 is a place of endless inspiration for Nicola. Her latest homage to Blackwell House sees blue birds, ruby tulips, roses and roundels filled with magenta spots. For admirers of rich, luxurious colour and for those who love a good story, 1901 meets and exceeds every expectation.



72/9 | Limited Edition 40

246/11 | Limited Edition 30

769/4 | Limited Edition 50



# PREPARING TO SCRAMBLE

Designer: Paul Hilditch



PLQ 1 | Numbered Edition

The Spitfire is probably the most famous and most respected aircraft of all time. It was the brainchild of Reginald Joseph Mitchell CBE FRAeS, (Commander of the Most Excellent Order of the British Empire and Fellow of the Royal Aeronautical Society) one of our most celebrated aeronautical engineers. Mitchell was born in Stoke-on-Trent and by 1919, he had become Chief Designer at Supermarine Aviation in Southampton. Although he died at the age of 42 his basic design was so sound that the Spitfire was continually improved throughout World War II.

# DERWENT RESERVOIR

Designer: Vicky Lovatt



62/17 | Numbered Edition

*Derwent Reservoir* is pictured with the 617 Squadron practising the low-level flights needed for Operation Chastise or 'Dam Busters'. Occasional flypasts of the Battle of Britain Memorial Flight at the reservoir are still staged to commemorate the events during the war. In September 2014, a unique and never to be repeated flypast took place involving the two remaining airworthy Lancasters, one from the Battle Of Britain Memorial Flight, and one from Canada, flying three passes in formation. On this prestige vase, that tribute is preserved forever.

# THE RETURN

Designer: Paul Hilditch



PLQ23 | Numbered Edition

The much admired and respected Lancaster, (also called Avro Lancaster,) was the most successful British heavy bomber of World War II. It first emerged from the heart of A.V. Roe & Company, Ltd., to a 1936 Royal Air Force order specification calling for a bomber powered by two 24-cylinder Rolls-Royce Vulture engines. The resultant aircraft, the Manchester, had engines which proved to be a failure, and Avro proposed a redesigned with four Rolls-Royce Merlin engines, and the result was the famous Lancaster. Paul's epic design sees the incredible planes had a victorious swoop as they return safely to their RAF base.

# QUEENS CHOICE

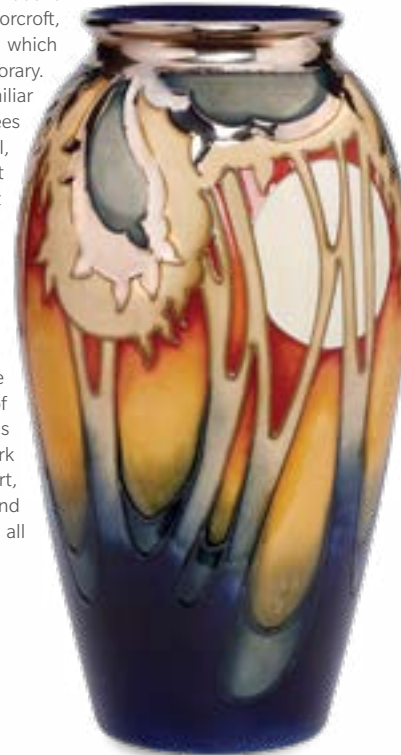
Designer: Emma Bossons FRSA



# MOON OVER EVENTIDE

Designer: Emma Bossons FRSA

*Moon Over Eventide* is not the *Eventide* of William Moorcroft, but a design which is contemporary. The familiar *Eventide* trees are there still, all set against an almost red evening sky. Behind the trees is a round, full moon, its light enriched by silver lustre at the rim of the vase. It is a magical work of ceramic art, beautiful and reflective, all rolled into one.



393/10 | Numbered Edition

# THE BEATRIX STANLEY COLLECTION

Designer: Nicola Slaney

Inspired by Lady Beatrix Stanley's incredible floral watercolour studies found in the archives held by the Royal Horticultural Society's Lindley Library, together with the iris that celebrates her famous name, contemporary ceramic designer, Nicola Slaney, committed herself to a brand-new pottery collection in honour of the talented gardener. A portion from the sale of each piece in the collection will go directly to the RHS.

© The Royal Horticultural Society 2018.  
Manufactured under licence granted by the Royal Horticultural Society.  
Registered Charity No 222879/SC038262.  
rhs.org.uk



**Lady Beatrix Stanley**  
Loving Cup | Limited Edition 40



**Lady Beatrix Stanley**  
41/4 | Limited Edition 40



**Sibbertoft**  
PLQ 3 | Limited Edition 50



**Peacock Flower**  
530/6 | Limited Edition 30



**Solanum**  
769/4 | Limited Edition 50



# RSPB BRITISH WOODLAND COLLECTION

**Designers:** Emma Bossons FRSA, Paul Hilditch and Vicky Lovatt

Designed exclusively for the RSPB to celebrate British woodland and some of the richest habitats for thousands of living species of animals and plants. Passionate about nature and dedicated to saving it, the RSPB is now the largest conservation charity in the UK. This year, Moorcroft has focused on the flora and fauna of British woodlands. Woodlands are fantastic spaces for nature, and teem with life.



Produced under license from RSPB Sales Ltd to raise awareness of the RSPB (charity registration England and Wales no 207076 and Scotland no SC037654). For all licensed products sold by W. Moorcroft Ltd, W. Moorcroft Ltd will donate a minimum of £1000 per annum to RSPB Sales Ltd, which gives all its distributable profits through Gift Aid to the RSPB.

**Fox and Cubs**  
401/5 | Limited Edition 30



**Hazel Pot Beetle**  
55/2 | Limited Edition 30



**Willow Tits**  
3/5 | Limited Edition 40



**Ancient Woodland**  
101/14 | Limited Edition 20



**A Clouded Clearing**  
7/7 | Limited Edition 40



**Nightjar**  
PLQ 7 | Limited Edition 50



**The Clan**  
711/6 | Limited Edition 50



**The Major Oak**  
65/16 | Limited Edition 15



**The Major Oak**  
PLQ 2 | Limited Edition 30

**Ferns and Foxgloves**  
75/10 | Limited Edition 30



# HELIOS FLAME

**Designer:** Emma Bossons FRSA



189/8 | Limited Edition 40

Emma's very first sunflower design for Moorcroft was inspired by the view from her desk at home - a view into her neighbour's garden where 'Helios Flame' sunflowers added both warmth and stature. This beautiful bicolour sunflower with warm, golden petals darkening to rich mahogany brown around a large dark centre look particularly spectacular in cottage gardens and as a bonus, in the autumn, the seedheads bring birds of every kind and colour flocking to the garden.



# SIR HAROLD HILLIER GARDENS

**Senior Designer:** Rachel Bishop BA (Hons)

This collection is inspired by the award-winning gardens set within 180 acres, south of Winchester in Hampshire. One of the outstanding features of the gardens is the spectacular seasonal planting displays which are brought to life in this collection by Rachel Bishop.



# TAMLAINÉ

**Designer:** Emma Bossons FRSA

Emma chose a classic shape to tell her interpretation of a painting called *Tamlaine* by James Herbert MacNair, one of The Glasgow Four with his brother-in-law Charles Rennie Mackintosh, based on the fable of the Ballad of Tam Lin. The story revolves around a woman named Janet who passes through the forest of Carterhaugh and meets Tam Lin who is a slave to the Fairy Queen. Janet picks a flower for him and eventually rescues him back to humanity from his elfin life. This design has fairy mischief, romance and enchantment all rolled into one.



72/12 | Limited Edition 30

# THE MAY QUEEN

**Designer:** Nicola Slaney

The May Queen was originally a panel in the ladies' luncheon room situated inside Miss Cranston's Ingram Street tearooms in Glasgow. The original panel was created by Margaret Macdonald Mackintosh. Her original panel was made to sit alongside its twin – called The Wassail. For 2019 a soft ivory clay is used, as the linework leads you on through stylised ladies and patterns, into a place which is restful, beautiful and totally inspiring.



101/18 | Numbered Edition



## SNOW SONG

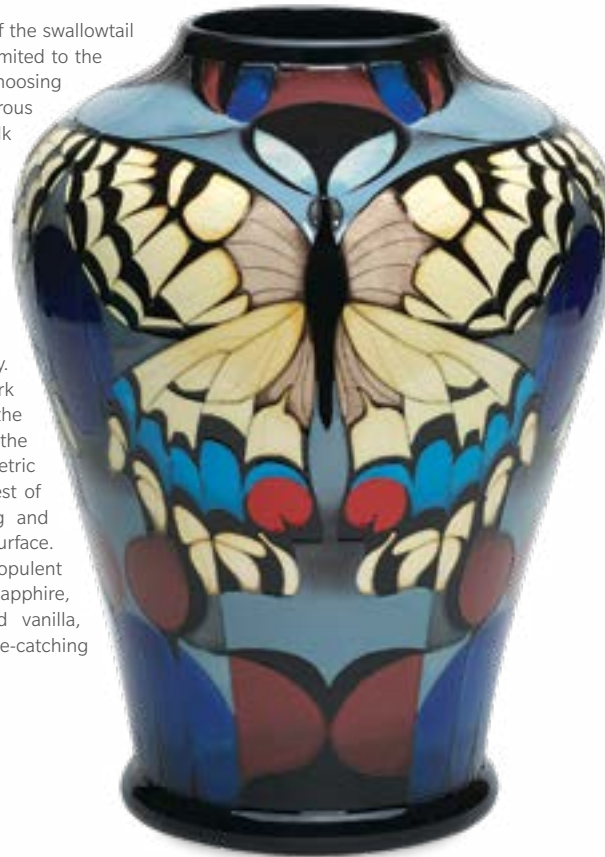
Senior Designer: Rachel Bishop BA (Hons)



## SWALLOWTAIL

Designer: Vicky Lovatt

The British race of the swallowtail butterfly is now limited to the Norfolk Broads, choosing sites with a vigorous growth of milk parsley. Adults emerge from their over-winter chrysalises, drying their wings in the safety of the reed beds before fluttering away. Careful linework weaves between the fragile veins of the wings and geometric patterns of the rest of the design, toing and froing across the surface. Vicky uses opulent colours of sapphire, pomegranate and vanilla, resulting in an eye-catching design.



576/15 | Numbered Edition

## KING OF THE FISHERS & SWING BY

Senior Designer: Rachel Bishop BA (hons)



PLQ 11 | Numbered Editions

## FROM DUSK TO DAWN

Designer: Emma Bossons FRSA

Fascinated by the rhythmical flicker of Pied Wagtails, Emma created a simple study of these sprightly black and white birds. When not standing and frantically wagging its tail up and down, the Pied Wagtail can be seen dashing in search of food. It can be heard singing during its flight, and at dusk they will gather to form large roosts in city centres. 'I found some really lovely images of Pied Wagtails either nesting or perching in groups in city trees. From there, I was inspired to draw them huddling together in their family groups' Emma explained.



246/11 | Numbered Edition



# SWEETNESS

Designer: Nicola Slaney



# SKOMER ISLAND

Designer: Helen Dale



Helen's puffins have a comical appearance that is heightened by their red and black eye-markings and bright orange legs. With half of the UK population at only a few sites, it is a Red List species, according to the RSPB. Helen's design is a cacophony of movement, underwater chaos, bubbles and colour as puffins scramble and dive to catch tasty morsels. The birds are frequent visitors to Skomer Island, less than a mile off the beautiful Pembrokeshire coast.

117/12 | Limited Edition 30

# FOSSIL COLLECTION

Designer: Alicia Amison



**Ammonite**  
PLQ 19 | Open Edition

**Fern**  
PLQ 19 | Open Edition

**Trilobite**  
PLQ 19 | Open Edition

**Limulus**  
PLQ 19 | Open Edition



# TALWIN

Designer: Nicola Slaney



# CHASUBLE

Senior Designer: Rachel Bishop BA (Hons)

After a visit to York Minster, one of the world's most magnificent cathedrals, Rachel took inspiration from a chasuble (the outermost liturgical vestment worn by clergy). Her design is a celebration of these special garments which are frequently decorated with intricate, woven tapestry-style ribbons, and sometimes even threaded with gold. A cluster of shiny red berries, surrounded by blooms of all varieties and a pair of mirrored doves, which symbolise love and peace, are featured.



401/5 | Limited Edition 50

# LOCHINVER

Designer: Vicky Lovatt

The road to Lochinver passes by the 16th century ruin of Ardvreck Castle which sits on the shores of Loch Assynt. 'It's just so beautiful; the light is fantastic and has a great "mood" about it', Vicky shared, 'I always make a point of stopping to photograph the area whenever I'm up there. Loch Assynt is a place with lots of happy memories for me.'



117/7 | Numbered Edition

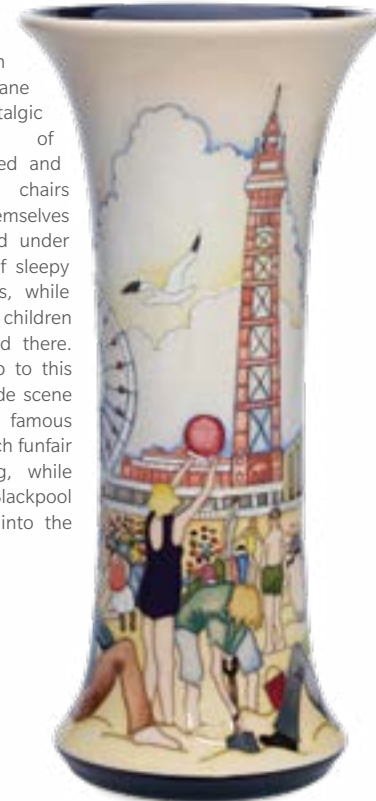


Back of Vase

# BLACKPOOL MEMORIES

Designer: Kerry Goodwin

Take a trip down memory lane with this nostalgic depiction of Blackpool. Red and white deck chairs bury themselves into the sand under the weight of sleepy holidaymakers, while mischievous children dart here and there. The backdrop to this relaxed seaside scene sees the famous Pleasure Beach funfair in full swing, while the famous Blackpool Tower soars into the sky.



159/10 | Limited Edition 40

# THE PLIGHT OF THE BUMBLEBEE

Senior Designer: Rachel Bishop BA (Hons)

There are currently 24 species of bumblebee resident in Britain. Yet sadly, the story of bumblebees over the past century has been one of decline. Two species became extinct in the UK during the 20th century and a further eight species are currently listed on at least one of the English, Welsh and Scottish conservation priority species lists due to their large-scale declines in distribution. Rachel has the ability to bring matters of importance into her art for others to appreciate and take notice.



**The Pollinators**  
365/12 | Numbered Edition



**The Pollinators**  
PLQ 10 | Numbered Edition



**The Pollinators**  
JU7 | Numbered Edition



**Just Bee-Cause**  
62/7 | Limited Edition 40



**Broken-Belted Bee**  
PLQ 7 | Limited Edition 30



**Large Garden Bee**  
PLQ 7 | Limited Edition 30



**Bilberry Bee**  
PLQ 7 | Limited Edition 30



**Great Yellow Bee**  
PLQ 7 | Limited Edition 30



**Seasonal Bees**  
769/6 | Limited Edition 50



# TWENTY WINTERS

Designer: Nicola Slaney



# CATHEDRAL GUARDIANS

Designer: Paul Hilditch

With great attention to detail Paul has captured every detail of two nesting owls in the safe surroundings of a gothic cathedral window. A grid of colourful squares map-out where panes of stained-glass lodge between incredible stone tracery. The owls huddle protectively over the peaceful stone niche in which they have made their home. There may even be the quiet squeaking of owlets, born into this stone sanctuary.



PLQ1 | Limited Edition 50

# WATERSHIP DOWN

Designers: Emma Bossons FRSA and Kerry Goodwin

The epic and best-selling novel by Richard Adams, Watership Down, has been adapted for the BBC (UK) and Netflix (Worldwide), and Moorcroft are honoured to have been asked to create an artistic homage to this new television adaptation. Journey with Hazel-Rah, the brave and wise leader; Bigwig, the strong yet impetuous warrior; and Fiver, the prophet who provides them with the impetus to avoid danger, and discover new found design territory, where art and heritage skills bring acclaimed words and animation to life.



Hazel-Rah  
869/9 | Numbered Edition

The General  
393/12 | Numbered Edition

Fiver  
102/7 | Numbered Edition

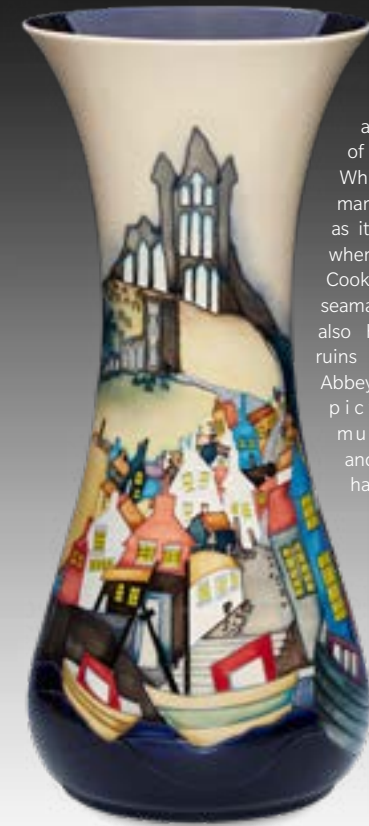
Bigwig  
189/8 | Numbered Edition

Clover  
7/7 | Numbered Edition



# WHITBY COLLECTION

**Designers:** Kerry Goodwin and Paul Hilditch



**Whitby**  
364/20 | Numbered Edition

Situated on the east coast of Yorkshire at the mouth of the River Esk, Whitby has a rich maritime heritage, as it is said to be where Captain Cook learned his seamanship. It is also home to the ruins of Whitby Abbey and a picturesque, multi-coloured and charming harbour town.



**Endeavour**  
PLQ5 | Numbered Edition

HMS Endeavour, was a British Royal Navy research vessel that Lieutenant James Cook commanded to Australia and New Zealand on his first voyage of discovery from 1768 to 1771. In 2018, a replica of the ship arrived in Whitby as a floating museum, to celebrate the 250th anniversary of Cook's first expedition to the Pacific.



**Endeavour**  
192/7 | Limited Edition 75

Whitby is home to the ruins of Whitby Abbey. Perched high on a cliff, it is easy to see why the haunting remains of Whitby Abbey were inspiration for Bram Stoker's gothic tale of 'Dracula'. Kerry's design features the crumbling brickwork and stone boulders, still fighting the pull of gravity.



**Whitby Abbey**  
161/11 | Limited Edition 50



**Back of Vase**

# GROUP OF SEVEN

**Designer:** Emma Bossons FRSA

*Group of Seven* tells a tale about a group of Canadian landscape painters from 1920 to 1933, also sometimes known as the Algonquin School. Believing that a distinct Canadian art could be developed through direct contact with nature, the Group of Seven is best known for its paintings inspired by the Canadian landscape, and initiated the first major Canadian national art movement. The group pursued a new, original style using bright colours, tactile paint handling, and simple yet dynamic forms. They changed the Canadian Shield, the dense, northern boreal forest and endless lakes, into a transcendent, spiritual force.



73/18 | Numbered Edition



# TOWN OF FLOWERS

**Designer:** Kerry Goodwin

Due to the popularity of the 2009 *House of Flowers* plaque, Kerry Goodwin was invited to create a prestige version of her ground breaking design. While the flowers on the vase remain the same, Kerry has added three additional landscape scenes between the flowers, each with a stylised garden gate. Each scene is different, some buildings have staircases, others have turrets or spires and all are in the Arts and Crafts style with tulips that burst into enchanting violet and burgundy hues as they soar up to the heavens.



159/18 | Numbered Edition

# WHITESPLENDOUR

**Designer:** Nicola Slaney

121/14 | Limited Edition 25

Nicola creates incredible drama with dark, anemone centres surrounded by pure white petals. Delicate cornflower-blue wildflowers dance beneath her showstopping blooms, while stems and seed heads scatter themselves liberally throughout.



46/10 | Limited Edition 25

101/7 | Limited Edition 25

# BLACK BARLOW

**Designer:** Vicky Lovatt

When designing a series of Moorcroft globes for the RHS Chelsea show garden in 2014, Vicky discovered a flower called 'Black Barlow'. Five years later and the double-flowering Aquilegias with their rich, deep purple, almost black petals that have a bluish gleam in bright sunlight are brought to life.



137/12 | Numbered Edition

# HERA'S BEAUTY

**Designer:** Vicky Lovatt

Always the eternal symbol of peace and tranquillity, the word 'calla' is the Greek word for beauty. Calla lilies are said to come from the ancient god Hera, the wife of Zeus. Focussing entirely on the incredible organic shapes of the leaves and flowers alone, Vicky has created a stunning tribute to this revered flower.



84/12 | Numbered Edition

# BURSLEY

**Senior Designer:** Kerry Goodwin

Kerry brings us *Bursley* - a Florianesque design in tribute to the pottery metropolis. Her design is based upon a traditional banded vase, which flares at the base, reminiscent of the first vases used at Moorcroft. Her colour palette showcases a variety of heady hues, applied and blended by expert hands. Moss green melts into sulphuric yellow while those 'chill blues' are met with a wonderful smoky burgundy.



64/13 | Numbered Edition

# WHO GOES THERE

**Designer:** Anji Davenport

Anji's fields are covered in snow: a winter sun spreads streaks of cold blue, amber and yellow across a distant village and rolling white hills. The designer's black cat cares nothing for the foxes, the chill of the sky or the white snow. A wooden post and rail garden fence protects her sanctuary and her retreat. A fox is prowling past with more of its family slinking quietly across the snow in the distance. To the black cat, the fox is a mere object of curiosity, not fear.



PLQ 11 | Open Edition

03/7 | Numbered Edition

# WOODSIDE FARM

**Designer:** Anji Davenport

In 2000 Anji's *Woodside Farm* was launched with great hope. Anji captured the very spirit of winter. *Woodside Farm* has now grown, more farm buildings have been erected and a vicarage now supports the church. This time the foxes have a new friend, and a barn owl oversees the quiet rumblings of a Massey Ferguson tractor. Sheep and cows quietly go about their business under a setting sun. In the morning, the glistening white snow may no longer hark to this romantic rural idyll. For now, all can bask in the wonderful colours and imagery on this prestige vase.



72/20 | Numbered Edition

# CALIFORNIA BUTTERFLY

**Designer:** Vicky Lovatt

The name of this particular species is California Pipevine Swallowtail because it mainly feeds on the California Pipevine plant featured. 'I'm always on the lookout for interesting species of butterflies and moths to use in design work, and I remember reading the story of a man in California, rescuing the species from near extinction by creating a butterfly enclosure in his garden, recalls vicky.'



120/16 | Limited Edition 30

# GLOBE THISTLE

**Designer:** Emma Bossons FRSA

Globe thistle is a clump-forming flower with upright, grey, woolly stems and spiny, grey-green leaves. Emma actually has these in her garden and throughout the summer she was fortunate enough to witness a kaleidoscope of butterflies visit their globe thistle haven, providing a theatrical display of fluttering wings, dancing flowerheads and bobbing leaves. Her design features tall, dusty-sage stems topped with pom-pom flowers, all sheathed under a bobbing crowd of Small White butterflies.



121/14 | Limited Edition 50

# THE ARK

**Designer:** Kerry Goodwin

The legend of how unicorns missed their place on Noah's Ark because they hid from Noah was something that captured Kerry's imagination. While the rain lashes down and the flood plains fill, elephants, bears, camels, geese, tortoises, snakes, cows and lions make their way into the shelter of the ark. But Kerry's unicorn does not. He prances and gallops and frolics in the rain, never to be seen again.



120/16 | Limited Edition 50





W. Moorcroft Ltd., Sandbach Road, Burslem, Stoke-on-Trent, Staffordshire ST6 2DQ, England.  
Telephone: +44 (0)1782 820500 Email: [enquiries@moorcroft.com](mailto:enquiries@moorcroft.com)  
[www.moorcroft.com](http://www.moorcroft.com)